

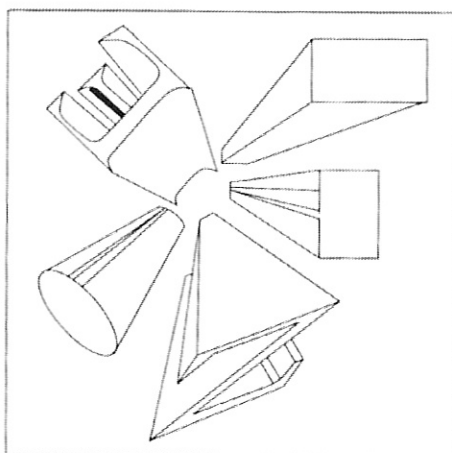
13th Assignment

Shifting Perspective, Unfamiliar Point of View

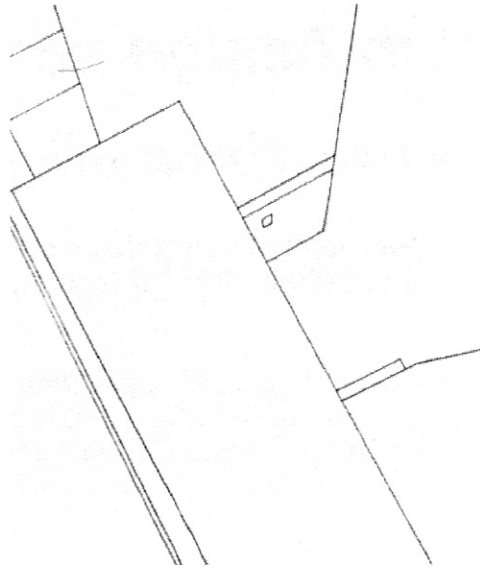
A. Draw three objects in linear perspective using three different vanishing points on eye-level lines for each one. You should include at least one of each in 1 point and 2 point linear perspective.

B. Draw something in accurate one or two-point perspective, but choose a point of view that makes the perspective lines seem unfamiliar. It can be a group of objects or a scene in a room - just about anything. All the things need to be within correct perspective.

Examples:



linear perspective



unfamiliar point of view

Each image space should be 8" x 10" and both pieces should be mounted neatly and straight to black foamboard with a half-inch border all the way around and in between the images. You may use the medium of your choice to produce these images. No colors other than black, white and grey are allowed. These are due on Monday. Those projects submitted without identification will receive a zero grade.

30 points possible.

Former SAU Student Examples

